

# AGRICULTURAL MECHANICS SYSTEMS

To be a pathway completer, you must take one concentrator course and enough classes to equal 3 credits.

## EXPLORER COURSES

Agricultural Science 1 A & B	1.0
Ag Mechanics and Tech 1 A & B	1.0
BTECH Automotive Introduction	1.0
Biology-Agricultural Science A & B	1.0
Business Communication 1 or BUSN 2200	0.5
Business Leadership 1	0.5
Construction Trades Foundation	0.5
Unmanned Ariel Systems	0.5
BTECH Welding Entry	1.0

## CONCENTRATOR COURSE

Ag Mechanics and Tech 2 A & B	1.0
-------------------------------	-----

## COMPLETER COURSES

Ag Mechanics, Advanced	0.5
BTECH Welding Tech, Advanced	1.0
CTE Internship	0.5



FFA is a dynamic youth organization that empowers students to become leaders, build lifelong skills, and explore exciting careers in agriculture and beyond.

## POSSIBLE CAREERS

Equipment Operator  
Heavy Equipment Technician  
Irrigation Specialist  
Seed Drill Technician  
Small Engine Mechanic  
Soil Testing Technician  
Tractor Mechanic



# ANIMAL AND VETERINARY SCIENCE

To be a pathway completer, you must take one concentrator course and enough classes to equal 3 credits.

## EXPLORER COURSES

Agricultural Science 1 A & B	1.0
Animal Science 1 A & B	1.0
Biology-Agricultural Science A & B	1.0
Business Communication 1 or BUSN 2200	0.5
Business Leadership 1	0.5
Veterinary Assistant A & B or BTECH Veterinary Assistant A & B	1.0

## CONCENTRATOR COURSE

Animal Science 2 or AGBS 1010	0.5
-------------------------------	-----

## COMPLETER COURSE

CTE Internship	0.5
----------------	-----



FFA is a dynamic youth organization that empowers students to become leaders, build lifelong skills, and explore exciting careers in agriculture and beyond.

## POSSIBLE CAREERS

Veterinarian  
Veterinary Technician  
Animal Scientist  
Animal Nutritionist  
Livestock Manager  
Animal Breeder  
Animal Behaviorist  
Veterinary Pathologist  
Animal Health Inspector  
Zookeeper



**BEGIN THE PATHWAY TO YOUR FUTURE**

**BEGIN THE PATHWAY TO YOUR FUTURE**

# FOOD SCIENCE, DIETETICS & NUTRITION

To be a pathway completer, you must take one concentrator course and enough classes to equal 3 credits.

## EXPLORER COURSES

Food & Nutrition 1	0.5
Human Development HDFS 1500	0.5
Medical Anatomy & Physiology A & B	1.0

## CONCENTRATOR COURSE

Dietetics & Nutrition 1	0.5
-------------------------	-----

## COMPLETER COURSES

Foundations of Nutrition (NDFS 1020)	0.5
CTE Internship	0.5



FCCLA is a student-led organization that helps you develop leadership skills, explore careers in family and consumer sciences, and make a positive impact in your community.

## POSSIBLE CAREERS

Clinical Dietitian  
Food Product Developer  
Food Safety Specialist  
Food Scientist  
Nutritionist  
Public Health Nutritionist  
Registered Dietitian



# PLANT SCIENCE

To be a pathway completer, you must take one concentrator course and enough classes to equal 3 credits.

## EXPLORER COURSES

Agricultural Science 1 A & B	1.0
Biology-Agricultural Science A & B	1.0
Business Communication 1 or BUSN 2200	0.5
Business Leadership 1	0.5
Plant & Soil Science 1 A & B or PSC 1800	1.0

## CONCENTRATOR COURSE

Floriculture	0.5
--------------	-----

## COMPLETER COURSE

CTE Internship	0.5
----------------	-----



FFA is a dynamic youth organization that empowers students to become leaders, build lifelong skills, and explore exciting careers in agriculture and beyond.

## POSSIBLE CAREERS

Agronomist  
Arborist  
Botanist  
Crop Consultant  
Entomologist  
Greenhouse Manager  
Horticulturist  
Plant Breeder/Geneticist  
Plant Pathologist  
Soil Scientist



**BEGIN THE PATHWAY TO YOUR FUTURE**

**BEGIN THE PATHWAY TO YOUR FUTURE**

# ARCHITECTURAL & INTERIOR DESIGN

To be a pathway completer, you must take one concentrator course and enough classes to equal 3 credits.

## EXPLORER COURSES

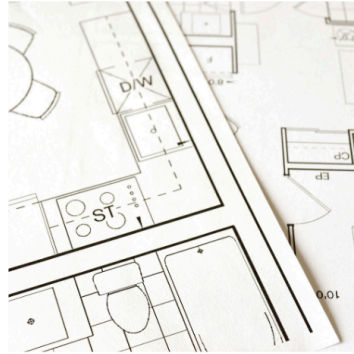
Business Communication 1 or BUSN 2200	0.5
BTECH Construction Technology	1.0
Architectural Design 1	0.5
Construction Trades Foundation	0.5
Digital Media 1	0.5
BTECH Electrician 1	1.0
Interior Design 1	0.5
BTECH Plumbing 1	1.0
Unmanned Ariel Systems	0.5

## CONCENTRATOR COURSE

Interior Design 2 or IDT 1010	0.5
-------------------------------	-----

## COMPLETER COURSE

CTE Internship	0.5
----------------	-----



FCCLA and TSA offer you opportunities to develop leadership skills and hands-on experience in family and consumer sciences, as well as technology and engineering, preparing you for diverse and rewarding careers.

## POSSIBLE CAREERS

Architectural Drafter  
Architectural Engineer  
Architect  
CAD Technician  
Commercial Interior Designer  
Interior Decorator  
Interior Designer  
Landscape Architect  
Sustainable Design Consultant



# CONSTRUCTION & STRUCTURAL SYSTEMS

To be a pathway completer, you must take one concentrator course and enough classes to equal 3 credits.

## EXPLORER COURSES

Ag Mechanics & Technology 1 A & B	1.0
Architectural Design 1	0.5
BTECH Construction Technology	1.0
Construction Trades Foundation	0.5
Interior Design 1	0.5
Unmanned Aerial Systems or UAS 1010	0.5
BTECH Welding, Entry Level	1.0
Woods 1	0.5

## CONCENTRATOR COURSE

BTECH Electrician 1	1.0
BTECH Plumbing 1	1.0

## COMPLETER COURSE

CTE Internship	0.5
----------------	-----



SkillsUSA is a student organization that equips you with the technical skills, leadership experience, and career connections to succeed in high-demand industries.

## POSSIBLE CAREERS

Building Inspector  
Carpenter  
Civil Engineer  
Construction Manager  
Electrician  
General Contractor  
HVAC Technician  
Plumber  
Project Estimator  
Structural Engineer



**BEGIN THE PATHWAY TO YOUR FUTURE**

**BEGIN THE PATHWAY TO YOUR FUTURE**



## BROADCASTING & DIGITAL MEDIA

To be a pathway completer, you must take one concentrator course and enough classes to equal 3 credits.

### EXPLORER COURSES

Computer Programming 1	0.5
Computer Science Principles or CS 1030	0.5
Digital Media 1	0.5
BTECH Digital Media 2	1.0
Unmanned Aerial Systems or UAS 1010	0.5
Web Development 1	0.5

### CONCENTRATOR COURSE

Video Production 1	0.5
--------------------	-----

### COMPLETER COURSE

Video Production 2	0.5
CTE Internship	0.5



SkillsUSA is a student organization that equips you with the technical skills, leadership experience, and career connections to succeed in high-demand industries.

### POSSIBLE CAREERS

Audio Engineer  
Broadcast Technician  
Camera Operator  
Content Creator  
Digital Media Producer  
News Anchor  
Radio DJ  
Social Media Manager  
Video Editor  
Videographer



## FASHION APPAREL & TEXTILES

To be a pathway completer, you must take one concentrator course and enough classes to equal 3 credits.

### EXPLORER COURSES

Digital Media 1	0.5
Sports & Outdoor Product Design FCSE 1040	0.5
Sewing Construction & Textiles 1	0.5
Fashion Design Studio	0.5

### CONCENTRATOR COURSES

Sewing Construction & Textiles 2	0.5
BTECH Fashion Design Merchandising	1.0

### COMPLETER COURSES

CTE Internship	0.5
----------------	-----



FCCLA is a student-led organization that helps you develop leadership skills, explore careers in family and consumer sciences, and make a positive impact in your community.

### POSSIBLE CAREERS

Costume Designer  
Fashion Buyer  
Fashion Designer  
Fashion Merchandiser  
Fashion Stylist  
Pattern Maker  
Textile Designer  
Textile Technologist  
Wardrobe Consultant



**BEGIN THE PATHWAY TO YOUR FUTURE**

**BEGIN THE PATHWAY TO YOUR FUTURE**



## GRAPHIC DESIGN & COMMUNICATION

To be a pathway completer, you must take one concentrator course and enough classes to equal 3 credits.

### EXPLORER COURSES

Digital Marketing	0.5
Digital Media 1	0.5
BTECH Digital Media 2	1.0
Interior Design 1	0.5
Unmanned Aerial Systems or UAS 1010	0.5

### CONCENTRATOR COURSES

Commercial Photography 1	0.5
--------------------------	-----

### COMPLETER COURSES

Commercial Photography 2	0.5
CTE Internship	0.5



FBLA, SkillsUSA, and TSA provide hands-on experiences, leadership opportunities, and competitive events in graphic design and communication, helping you develop the creative and technical skills needed for a successful career in the industry.

### POSSIBLE CAREERS

Art Director  
Brand Designer  
Graphic Designer  
Illustrator  
Marketing Coordinator  
Multimedia Artist  
Print Production Specialist  
Social Media Designer  
User Experience (UX) Designer  
Web Designer



## FINANCE

To be a pathway completer, you must take one concentrator course and enough classes to equal 3 credits.

### EXPLORER COURSES

Accounting 1 or BUSN 1111	0.5
Business Communication or BUSN 2200	0.5
Business Office Specialist	0.5
Marketing 1	0.5
BTECH Real Estate	1.0
Sports & Recreation Marketing	0.5
Web Development 1	0.5

### CONCENTRATOR COURSE

BTECH Accounting 2	1.0
Accounting 2	0.5

### COMPLETER COURSE

CTE Internship	0.5
----------------	-----



FBLA is a student organization that empowers you to develop leadership skills and financial expertise through hands-on experiences and competitive events in the finance industry.

### POSSIBLE CAREERS

Accountant  
Financial Analyst  
Financial Planner  
Investment Banker  
Loan Officer  
Mortgage Broker  
Personal Financial Advisor  
Risk Manager  
Tax Advisor  
Wealth Manager



**BEGIN THE PATHWAY TO YOUR FUTURE**

**BEGIN THE PATHWAY TO YOUR FUTURE**

## BUSINESS

To be a pathway completer, you must take one concentrator course and enough classes to equal 3 credits.

### EXPLORER COURSES

Accounting 1 or BUSN 1111	0.5
Business Communication or BUSN 2200	0.5
Business Leadership 1	0.5
Business Office Specialist	0.5
Digital Media 1	0.5
Marketing 1	0.5
BTECH Real Estate	1.0
Sports & Recreation Marketing	0.5
Web Development 1	0.5



FBLA and DECA are student organizations that prepare you for success in business and entrepreneurship through leadership development, real-world competitions, and networking opportunities.

### POSSIBLE CAREERS

Account Manager  
Business Analyst  
Financial Advisor  
Human Resources Specialist  
Management Consultant  
Marketing Manager  
Operations Manager  
Project Manager  
Sales Representative  
Supply Chain Manager



### CONCENTRATOR COURSE

Business Management or BUSN 1010	0.5
-------------------------------------	-----

### COMPLETER COURSE

CTE Internship	0.5
----------------	-----

## MARKETING

To be a pathway completer, you must take one concentrator course and enough classes to equal 3 credits.

### EXPLORER COURSES

Accounting 1 or BUSN 1111	0.5
Business Communication or BUSN 2200	0.5
Business Office Specialist	0.5
Digital Media 1	0.5
Marketing 1	0.5
BTECH Real Estate	1.0
Sports & Recreation Marketing	0.5
Web Development 1	0.5



DECA is a student organization that helps you excel in marketing by offering real-world experiences, leadership opportunities, and competitive events that prepare you for a dynamic career.

### CONCENTRATOR COURSE

Digital Marketing	0.5
-------------------	-----

### COMPLETER COURSE

CTE Internship	0.5
----------------	-----

### POSSIBLE CAREERS

Brand Manager  
Content Strategist  
Digital Marketing Specialist  
Market Research Analyst  
Marketing Coordinator  
Marketing Manager  
Public Relations Specialist  
SEO Specialist  
Social Media Manager  
Advertising Account Executive



**BEGIN THE PATHWAY TO YOUR FUTURE**

**BEGIN THE PATHWAY TO YOUR FUTURE**

# PROGRAMMING & SOFTWARE DEVELOPMENT

To be a pathway completer, you must take one concentrator course and enough classes to equal 3 credits.

## EXPLORER COURSES

Computer Programming 1	0.5
Computer Science Principles or CS 1030	0.5
Exploring Computer Science	0.5
BTECH Information Tech, Intro	1.0
Math 1050	0.5
Robotics 1	0.5
Unmanned Aerial Systems or UAS 1010	0.5
Web Development 1	0.5

## CONCENTRATOR COURSES

Computer Programming 2 or CS 1400	0.5
Gaming Development Fundamentals 1	0.5

## COMPLETER COURSES

Gaming Development Fundamentals 2	0.5
CTE Internship	0.5



FBLA and SkillsUSA are student organizations that enhance your skills through leadership opportunities, hands-on projects, and competitive events tailored to the tech industry.

## POSSIBLE CAREERS

Application Developer  
Blockchain Developer  
Data Scientist  
Front-End Developer  
Full-Stack Developer  
Mobile App Developer  
Software Engineer  
Software Tester/QA Analyst  
Systems Analyst  
Web Developer



# WEB DEVELOPMENT

To be a pathway completer, you must take one concentrator course and enough classes to equal 3 credits.

## EXPLORER COURSES

Computer Science Principles or CS 1030	0.5
Computer Programming 1	0.5
Digital Media 1	0.5
Exploring Computer Science	0.5
BTECH Information Tech, Intro	1.0
Marketing 1	0.5
Math 1050	0.5
Web Development 1	0.5

## CONCENTRATOR COURSE

Web Development 2	0.5
-------------------	-----

## COMPLETER COURSE

CTE Internship	0.5
----------------	-----



FBLA, TSA, and SkillsUSA are student organizations that enhance your skills through leadership opportunities, hands-on projects, and competitive events tailored to the tech industry.

## POSSIBLE CAREERS

Back-End Developer  
Front-End Developer  
Full-Stack Developer  
UI/UX Designer  
Web Designer  
Web Developer  
Web Project Manager  
Web Security Specialist  
Web Systems Administrator  
WordPress Developer



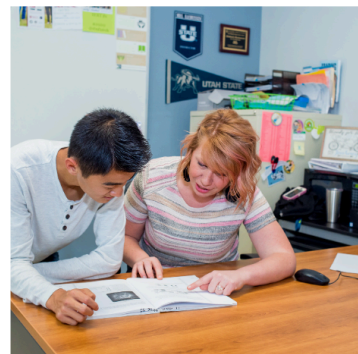
**BEGIN THE PATHWAY TO YOUR FUTURE**

**BEGIN THE PATHWAY TO YOUR FUTURE**



# K-12: TEACHING AS A PROFESSION

To be a pathway completer, you must take one concentrator course and enough classes to equal 3 credits.



## EXPLORER COURSES

Business Communication 1 or BUSN 2200	0.5
English 1010	0.5
Human Development or HDFS 1500	0.5
Math 1050	0.5
Teaching as a Profession 1	0.5

## CONCENTRATOR COURSE

Aspiring Educators/TEAL 1010	0.5
------------------------------	-----

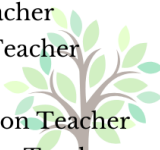
## COMPLETER COURSE

Principles of Educational Instruction/ USU ITLS 2500	0.5
CTE Internship	0.5

Educators Rising provides real-world teaching experiences and leadership opportunities that prepare you for a fulfilling career in K-12 education, inspiring the next generation of students.

## POSSIBLE CAREERS

Art Teacher  
Elementary School Teacher  
High School Teacher  
Middle School Teacher  
Music Teacher  
Physical Education Teacher  
Special Education Teacher  
STEM Teacher  
School Counselor  
School Librarian



# HEALTH SCIENCE

To be a pathway completer, you must take one concentrator course and enough classes to equal 3 credits.



## EXPLORER COURSES

Behavioral Health, Intro	0.5
Foundations of Nutrition or NDFS 1020	0.5
Intro to Health Science	0.5
Human Development or HDFS 1500	0.5
Medical Terminology	0.5
Psychology	0.5

## CONCENTRATOR COURSES

Emergency Medical Response or RHS 2300	0.5
Exercise Science A & B or RHS 2175	1.0
Medical Anatomy & Physiology A & B	1.0

## COMPLETER COURSES

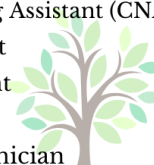
BTECH Dental Assistant	1.0
BTECH Medical Assistant	1.0
BTECH Nurse Assistant	1.0
BTECH Pharmacy Tech	1.0
CTE Internship	0.5

## HOSA'S MISSION

To empower Future Health Professionals to become leaders in the global health community through education, collaboration, and experience.

## POSSIBLE CAREERS

Anesthesia Technician  
Athletic Trainer  
Certified Nursing Assistant (CNA)  
Dental Hygienist  
Medical Assistant  
Pediatrician  
Pharmacy Technician  
Phlebotomist  
Registered Nurse (RN)  
Surgical Technician



**BEGIN THE PATHWAY TO YOUR FUTURE**



**MOUNTAIN CREST HIGH SCHOOL**  
**2024-2025**

**BEGIN THE PATHWAY TO YOUR FUTURE**



**MOUNTAIN CREST HIGH SCHOOL**  
**2024-2025**

# ENGINEERING

To be a pathway completer, you must take one concentrator course and enough classes to equal 3 credits.

## EXPLORER COURSES

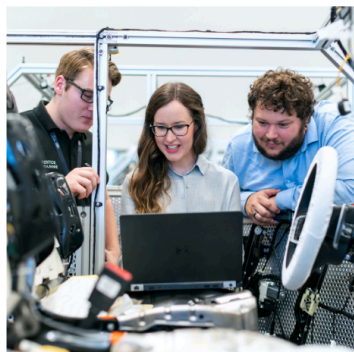
Architectural Design 1	0.5
BTECH CAM Automated Manufacturing	0.5
Electronics 1	0.5
Engineering Principles 1	0.5
BTECH Machining 1	1.0
Robotics 1	0.5
Unmanned Aerial Systems or UAS 1010	0.5
BTECH Welding Technician, Entry	1.0
Woods 1	0.5

## CONCENTRATOR COURSES

Electronics 2	0.5
Engineering Principles 2	0.5
Robotics 2	0.5

## COMPLETER COURSES

CTE Internship	0.5
----------------	-----



TSA offers hands-on projects, leadership opportunities, and competitive events that prepare you for success in the engineering pathway, helping you develop the technical and problem-solving skills needed for a future in engineering.

## POSSIBLE CAREERS

Aerospace Engineer  
Chemical Engineer  
Civil Engineer  
Electrical Engineer  
Environmental Engineer  
Industrial Engineer  
Mechanical Engineer  
Petroleum Engineer  
Software Engineer  
Structural Engineer



# FAMILY & HUMAN SERVICES

To be a pathway completer, you must take one concentrator course and enough classes to equal 3 credits.

## EXPLORER COURSES

Behavioral Health, Intro	0.5
Intro to Health Science	0.5
Human Development or HDFS 1500	0.5
Psychology	0.5

## CONCENTRATOR COURSES

Individual & Family Relationships or HDFS 2400	0.5
Personal & Family Finance	0.5

## CONCENTRATOR COURSE

CTE Internship	0.5
----------------	-----



FCCLA and HOSA are student organizations that empower you to make a difference in family and human development through leadership opportunities, hands-on experiences, and career-focused activities.

## POSSIBLE CAREERS

Child Life Specialist  
Family Counselor  
Human Services Administrator  
Marriage and Family Therapist  
Mental Health Counselor  
School Social Worker  
Social Services Director  
Substance Abuse Counselor  
Victim Advocate  
Youth Services Coordinator



**BEGIN THE PATHWAY TO YOUR FUTURE**

**BEGIN THE PATHWAY TO YOUR FUTURE**

# PERSONAL CARE SERVICES (COSMETOLOGY)

To be a pathway completer, you must take one concentrator course and enough classes to equal 3 credits.

## EXPLORER COURSES

Business Leadership 1	0.5
Business Office Specialist	0.5
Marketing 1	0.5

## CONCENTRATOR COURSE

Cosmetology	3.0
-------------	-----

## COMPLETER COURSE

CTE Internship	0.5
----------------	-----



SkillsUSA is a student organization that helps you excel in cosmetology by offering hands-on training, industry certifications, and competitive events that prepare you for a successful career in beauty and personal care.

## POSSIBLE CAREERS

Barber  
Cosmetologist  
Esthetician  
Hair Colorist  
Hair Stylist  
Makeup Artist  
Nail Technician  
Salon Manager  
Skincare Specialist  
Spa Therapist



**BEGIN THE PATHWAY TO YOUR FUTURE**



**MOUNTAIN CREST HIGH SCHOOL  
2024-2025**

# WELDING & MACHINING

To be a pathway completer, you must take one concentrator course and enough classes to equal 3 credits.

## EXPLORER COURSES

BTECH Machining 1	1.0
BTECH Welding Tech, Entry	1.0

## CONCENTRATOR COURSES

BTECH Machining 2	1.0
BTECH Welding Tech, Intermediate	1.0

## COMPLETER COURSES

BTECH Welding Tech, Advanced	1.0
CTE Internship	0.5



FFA and SkillsUSA offer opportunities to advance your skills through hands-on training, industry competitions, and leadership development, preparing you for a successful career in these high-demand fields.

## POSSIBLE CAREERS

CNC Machinist  
Fabricator  
Industrial Welder  
Instrumentation Technician  
MIG Welder  
Pipefitter  
Pipe Welder  
Production Welder  
TIG Welder  
Welding Inspector



**BEGIN THE PATHWAY TO YOUR FUTURE**



**MOUNTAIN CREST HIGH SCHOOL  
2024-2025**



## DIESEL

To be a pathway completer, you must take one concentrator course and enough classes to equal 3 credits.

### EXPLORER COURSES

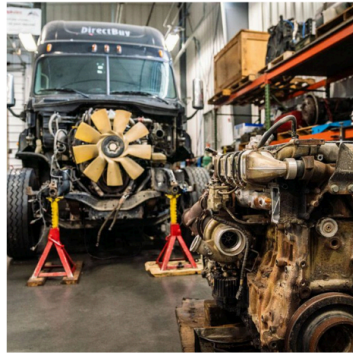
Ag Mechanics and Tech 1A & 1B	1.0
BTECH Automotive Intro A, B, C	3.0
Electronics 1	0.5
BTECH Machining 1	0.5
BTECH Welding Tech, Entry	1.0

### CONCENTRATOR COURSE

BTECH ASE Diesel IMMR	1.0
-----------------------	-----

### COMPLETER COURSES

BTECH ASE Diesel Brakes	1.0
BTECH Diesel Electrical Systems	1.0
BTECH ASE Diesel Engine	1.0
BTECH Professional Driver	1.0
CTE Internship	0.5



SkillsUSA offers you hands-on experience and competitive events that build your skills and leadership in your chosen field, setting you up for career success and industry recognition.

### POSSIBLE CAREERS

Diesel Mechanic  
Diesel Engine Technician  
Diesel Equipment Inspector  
Diesel Performance Specialist  
Diesel Service Manager  
Heavy Equipment Mechanic  
Heavy Truck Technician  
Mobile Diesel Technician  
Truck Fleet Manager  
Transmission Specialist

## AGRICULTURE, FOOD, & NATURAL RESOURCES

### INTERNSHIP OPPORTUNITIES



Haviland  
Training  
Stables, Inc.

Brooks  
Ranch



**BEGIN THE PATHWAY TO YOUR FUTURE**

# ARCHITECTURE & CONSTRUCTION

## INTERNSHIP OPPORTUNITIES

---



# ARTS, AUDIO/VIDEO TECH & COMMUNICATIONS

## INTERNSHIP OPPORTUNITIES

---



# BUSINESS, FINANCE, & MARKETING

## INTERNSHIP OPPORTUNITIES

---



# EDUCATION AND TRAINING

## INTERNSHIP OPPORTUNITIES

---



### Elementary Teacher

Potentially get paid for  
after school tutoring

### Middle School Teacher

### High School Teacher

CTE or core subject areas

### School Counselor

### Athletic Director



# COMPUTER SCIENCE & INFORMATION TECHNOLOGY

INTERNSHIP OPPORTUNITIES

---



# ENGINEERING & TECHNOLOGY

INTERNSHIP OPPORTUNITIES

---



# MANUFACTURING

## INTERNSHIP OPPORTUNITIES

---



# HEALTH SCIENCE

## INTERNSHIP OPPORTUNITIES

---

